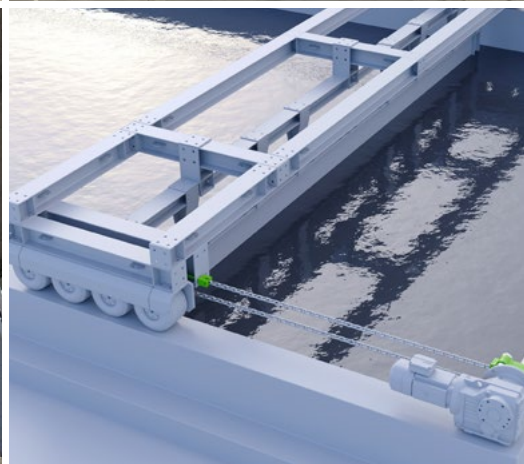
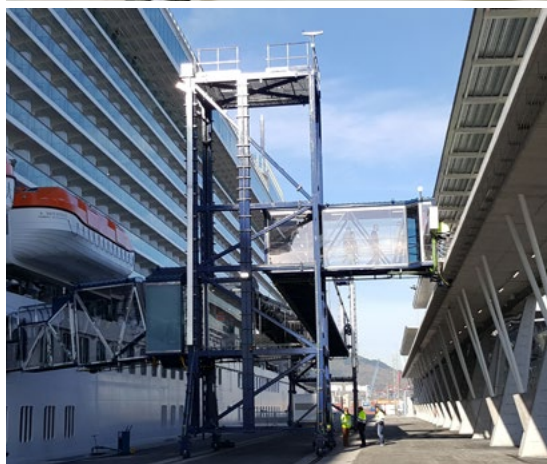
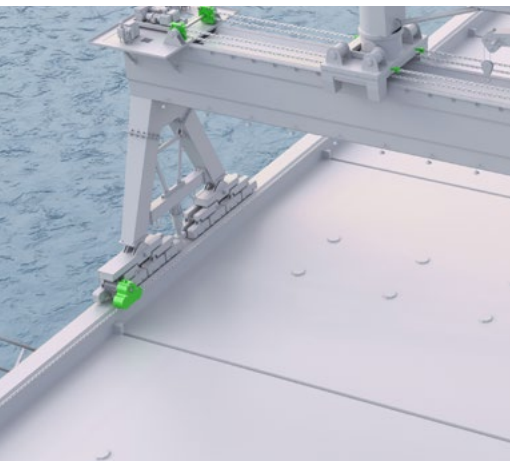


# DRIVE TECHNOLOGY

PIVOTING · LIFTING · MOVING · TELESCOPING · ROTATING  
WITH THE TECDOS ROUND LINK CHAIN



## POWERFUL IN EVERY ENVIRONMENT

- ✓ Durable, reliable and safe
- ✓ Complete solutions for all requirements
- ✓ Competent on-site service

# Table of contents

## RUD DRIVE SYSTEMS

### POWERFUL IN ANY ENVIRONMENT

RUD TECDOS drive systems offer complete technical systems for generating motion by means of power transmission. A range of standard components can be combined modularly to form RUD TECDOS complete systems.

In places where other systems fail, the RUD TECDOS portfolio proves its worth. It covers a wide range of applications industry-wide and across all sectors, reliably and safely swivelling, lifting, moving, telescoping and rotating.

### REAL CHALLENGES REAL SOLUTIONS

The RUD TECDOS book is more than just a technical brochure: It shows specific projects where we have supplied drive components for innovative and efficient systems.

Want an example?  
A movable hall roof in the harbour, which is moved safely with our TECDOS PI-GAMMA drive units and round steel chains - even in extreme weather conditions.

**Curious?** You can order the book free of charge here



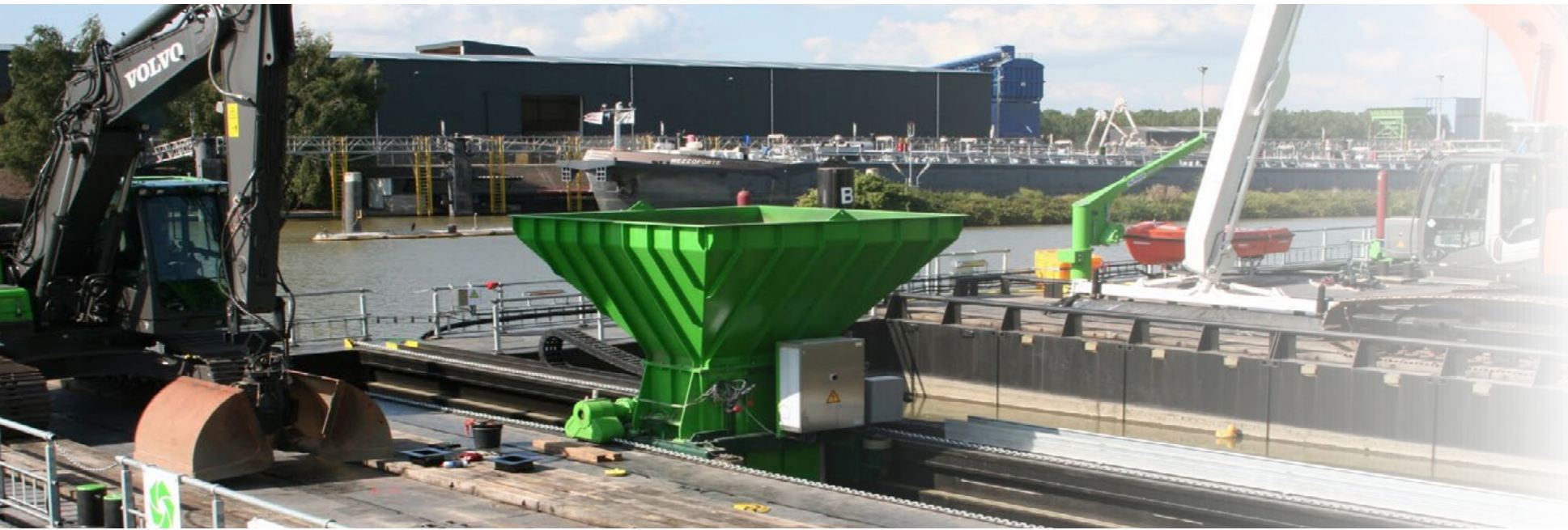
<b>1. RUD TECDOS Applications at a glance</b> .....	<b>04</b>
<b>2. RUD TECDOS Systems and products</b> .....	<b>08</b>
2.1 RUD TECDOS PI-GAMMA Drive.....	10
2.2 System applications for TECDOS® PI-GAMMA .....	12
2.3 RUD TECDOS OMEGA Drive .....	14
2.4 System applications for TECDOS® OMEGA.....	16
2.5 RUD TECDOS Round steel chain .....	18
2.6 RUD TECDOS Chain connector   chain end fixing .....	20
2.7 RUD TECDOS Pocket wheels .....	21
2.8 RUD TECDOS Foolproof high dynamic shackle.....	22
2.9 RUD TECDOS PowerPoint fixing point.....	23
2.10 RUD TECDOS Lift limiter .....	24
2.11 RUD TECDOS Cobra fork head hook.....	25
<b>3. RUD TECDOS Drive solutions</b> .....	<b>26</b>
<b>4. RUD TECDOS Services</b> .....	<b>30</b>
4.1 RUD TECDOS Service .....	32
4.2 RUD Locations .....	34
4.3 RUD Technical questionnaire.....	35

### USED IN A WIDE VARIETY OF INDUSTRIES:

Maritime & Inland Waters | Hydraulic Steelwork | Building Dynamics |  
Handling Solutions | Automotive

### RUD TECDOS drive technology in use:





# 1. APPLICATIONS AT A GLANCE

**HIGH  
PERFORMANCE  
IS OUR DRIVING  
FORCE.**

Whatever direction you want to move something, the combination of TECDOS components provides suitable solutions for the most diverse fields of industry.

# 1. RUD TECDOS® Applications at a glance





## 2. SYSTEMS & PRODUCTS

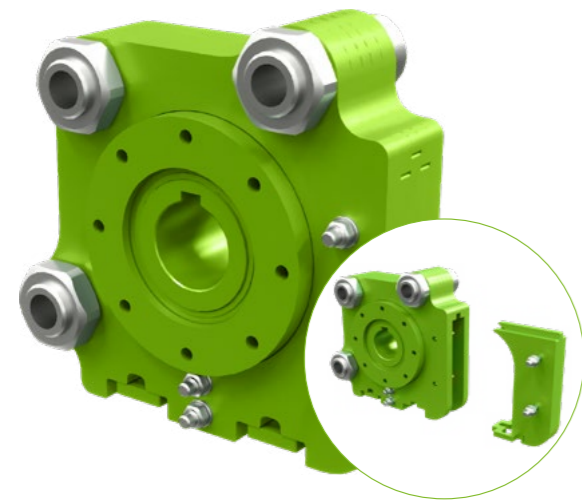
SAFE THROUGH DAILY LIFE.

Our systems and components guarantee sustainable solutions, even under difficult conditions. TECDOS systems are user friendly and can be combined flexibly.

## 2. RUD TECDOS® Systems and products

### 2.1 RUD TECDOS® PI-GAMMA DRIVE

TECDOS PI-GAMMA pocket wheel blocks are particularly suitable for horizontal / ascending and vertical use with a fixed 180 degree (PI) or flexible 90 to 180 degree deflection (GAMMA).



#### Attachments TECDOS® PI-GAMMA:

Along with TECDOS end fixings, many attachment solutions are available from the VIP lifting means\* program.



\*The VIP standard bolt must be replaced by a TECDOS special bolt when combining TECDOS chains.

#### TECDOS® PI-GAMMA drive principle

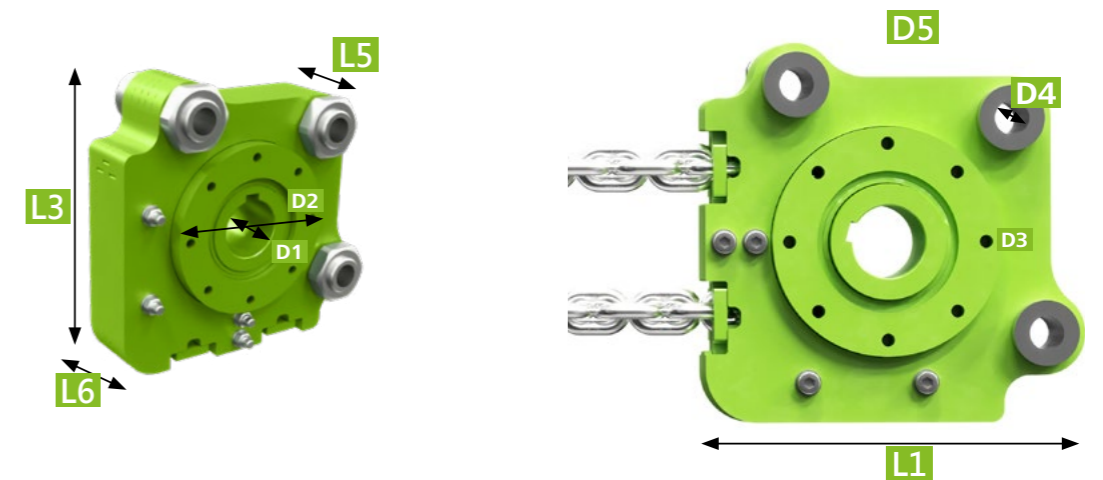
The system can be used as either drive or deflection modules with integrated roller bearings. This means the drive shaft is free from any additional forces and does not need a shaft if used as a deflection module. Integrated chain guide and straightener. PI-GAMMA drives are available in sizes to suit TEC6 - TEC260 TECDOS dimensions.

#### Advantages:

- Flexible, durable, reliable and safe
- Complete solutions for all requirements
- Galvanised surface (doesn't apply to the entertainment area)
- Small sizes & heavy loads | quiet running | also in black
- Competent on-site service
- The TECDOS drive unit with insert enables a 180° redirection
- When the insert is removed, the drive unit enables a redirection between 90° and 180°
- Integrated bearing
- Chain guide with integrated stripper
- Drive shaft without any additional forces
- Shaft not required when utilising redirection module

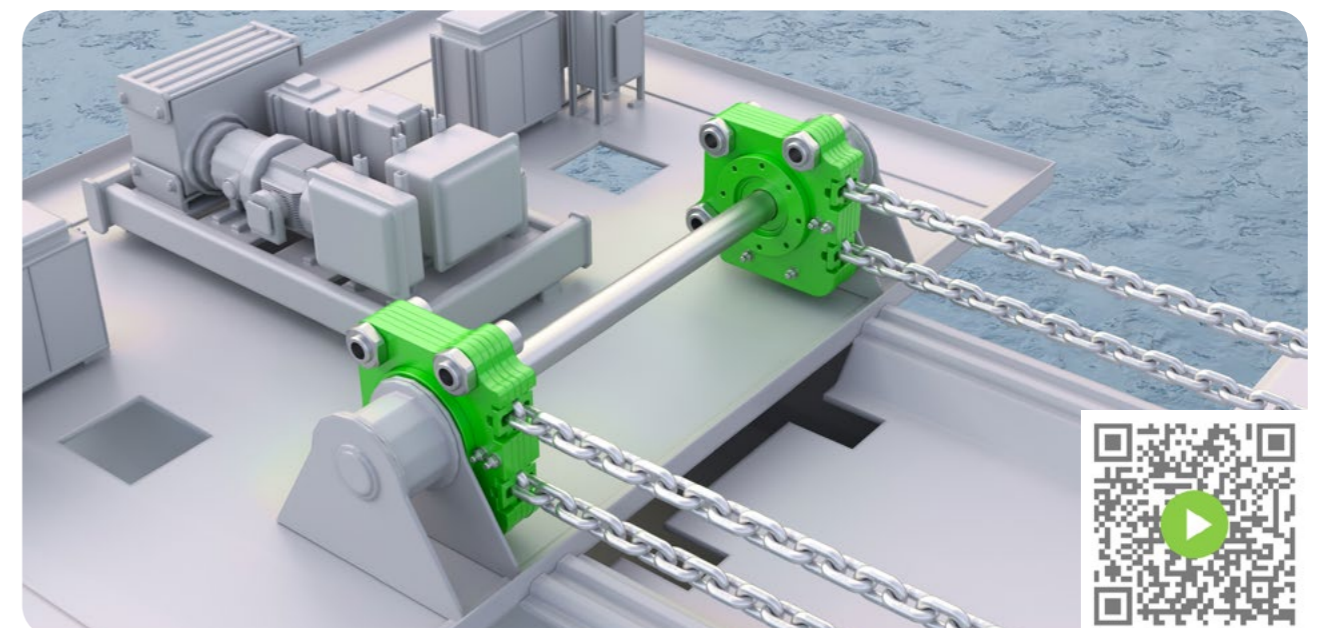
#### NOTE

We can provide special paintwork according to maritime specifications on request.



Chain	No. of teeth	Pitch circle diameter [mm]	L1 [mm]	L3 [mm]	L5 [mm]	L6 [mm]	D1 [mm]	D2 [mm]	D3 [mm]	D4 [mm]	D5 [mm]	Work-manship	Weight [kg]	Part no.
TEC 6	6	58,4	145	145	60	50	30	75	M6 x 12	13	-	3 Hole	4,5	7910312
TEC 12	6	82,3	206	210	83	79	40	100	M8 x 20	14	25	4 Hole	12,0	7910647
TEC 25	6	108,0	259	265	110	105	50	140	M12 x 20	19	25	4 Hole	26,0	7910670
TEC 43	6	139,2	314	328	140	126	70	185	M16 x 30	22	25	4 Hole	55,0	7910702
TEC 65	6	174,5	373	373	150	146	90	210	M16 x 35	28	25	4 Hole	84,0	7910357
TEC 140	6	256,2	495	548	220	214	130	316	M16 x 39,5	50	25	2 Hole	270	7912280
TEC 260	6	347,8	710	620	258	254	180	330	M16 x 39,5	50	25	2 Hole	536	7912304

TECDOS PI-GAMMA drives can be manufactured to match all chain sizes and numbers of teeth. Other sizes on request.



## 2. RUD TECDOS® Systems and products

### 2.2 System applications for TECDOS® PI-GAMMA

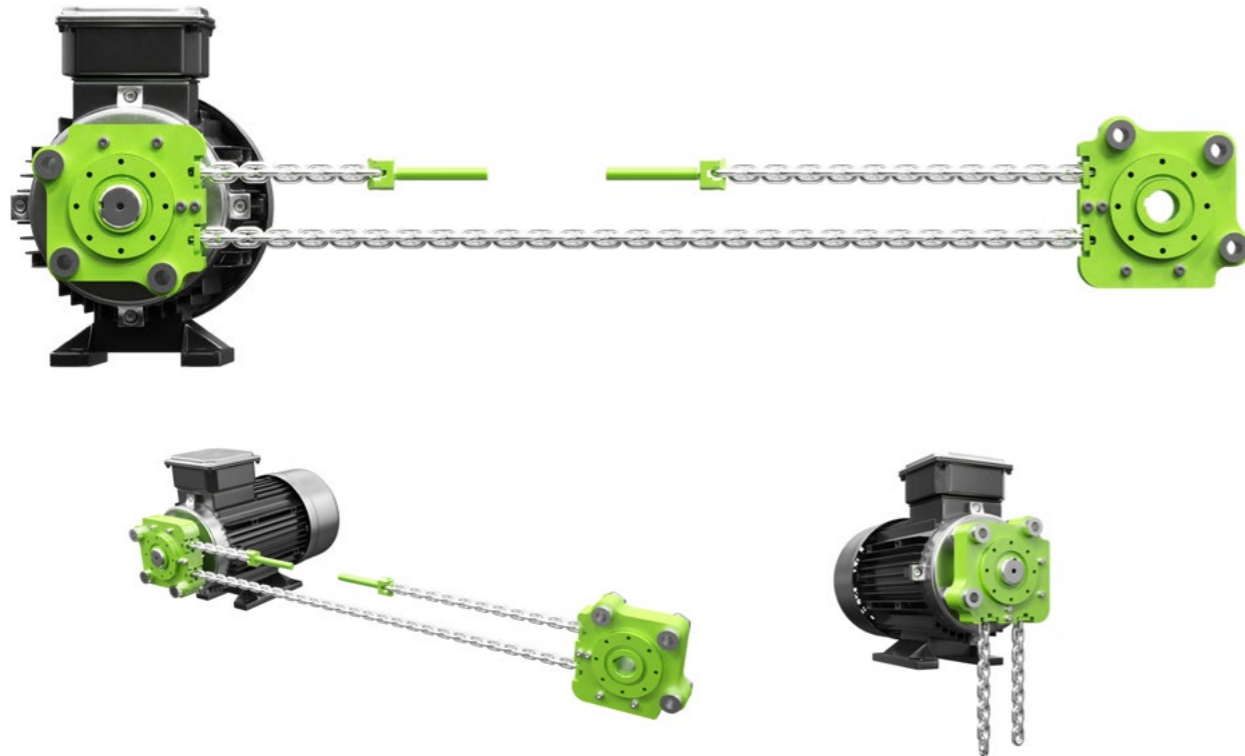
Modular design for highest-possible flexibility when selecting electrical, hydraulic or pneumatic motors. Also available in black: perfect for use in stage and event technology.

#### Horizontal TECDOS® PI-GAMMA drive

Horizontal (fixed 180 degrees) drive in a double arrangement with two parallel PI drives. Also in 3 and 4-way arrangement possible depending on the application.

#### Vertical TECDOS® PI-GAMMA drive

Vertical (fixed 180 degrees) drive in a double arrangement with two parallel PI drives. Also in 2, 3 and 4-way arrangement possible depending on the application.



#### Double strand with TECDOS® PI-GAMMA drive

Flexible (90 to 180 degrees) drive in a double arrangement with one drive. Also in 3 and 4-way arrangement possible depending on the application.



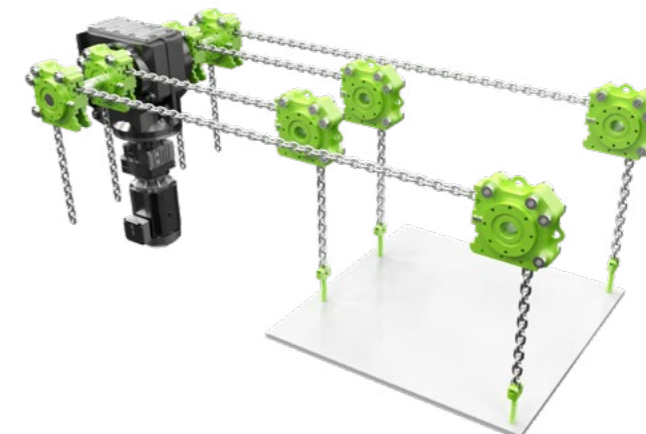
#### 3-way arrangement with TECDOS® PI-GAMMA drive

TECDOS PI-GAMMA 3-way arrangement with chain drive.



#### 4-way arrangement with TECDOS® PI-GAMMA drive

TECDOS PI-GAMMA 4-way arrangement with chain drive.



## 2. RUD TECDOS® Systems and products

### 2.3 RUD TECDOS® OMEGA DRIVE | INNOVATIVE DRIVE SYSTEM

OMEGA DRIVE is the ideal drive solution for linear or rotating movements. In order to process a running crane trolley on a carrier, ship cranes on a rail or for skid application. The OMEGA DRIVE is superior to comparable rack and pinion and sprocket wheel solutions.

In comparison it is less sensitive to dirt, sand, ice, etc., is easier to mount and tolerates deviations of alignment. The modular concept allows the drive through electric, hydraulic or pneumatic motors, at order point electric motor can be supplied.

#### OMEGA DRIVE principle

Drive shaft free of additional forces

Guide wheels



Integrated chain guide

Plain bearings on hub

#### OMEGA DRIVE complete system

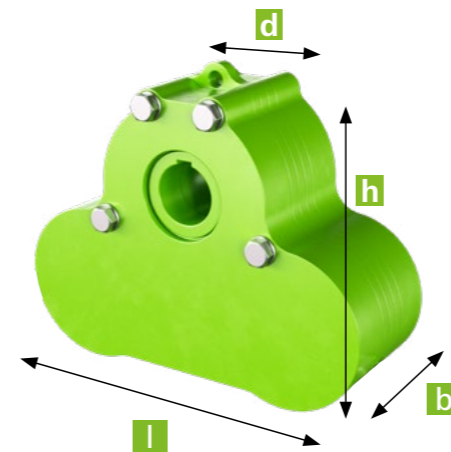
This innovative drive concept also runs smoothly when rack drives, spindle drives or roller chains reach their limits. Dirt, rain, abrasive materials and even ice do not stop the RUD OMEGA DRIVE. This drive concept has proven itself in numerous applications around the world.

References on request.

#### OMEGA DRIVE applications

Moving cranes on ships, tracking solar panels in the direction of the sun or simply moving a machine - RUD OMEGA is the perfect, innovative drive solution.

Attachments for flanging motors on request.



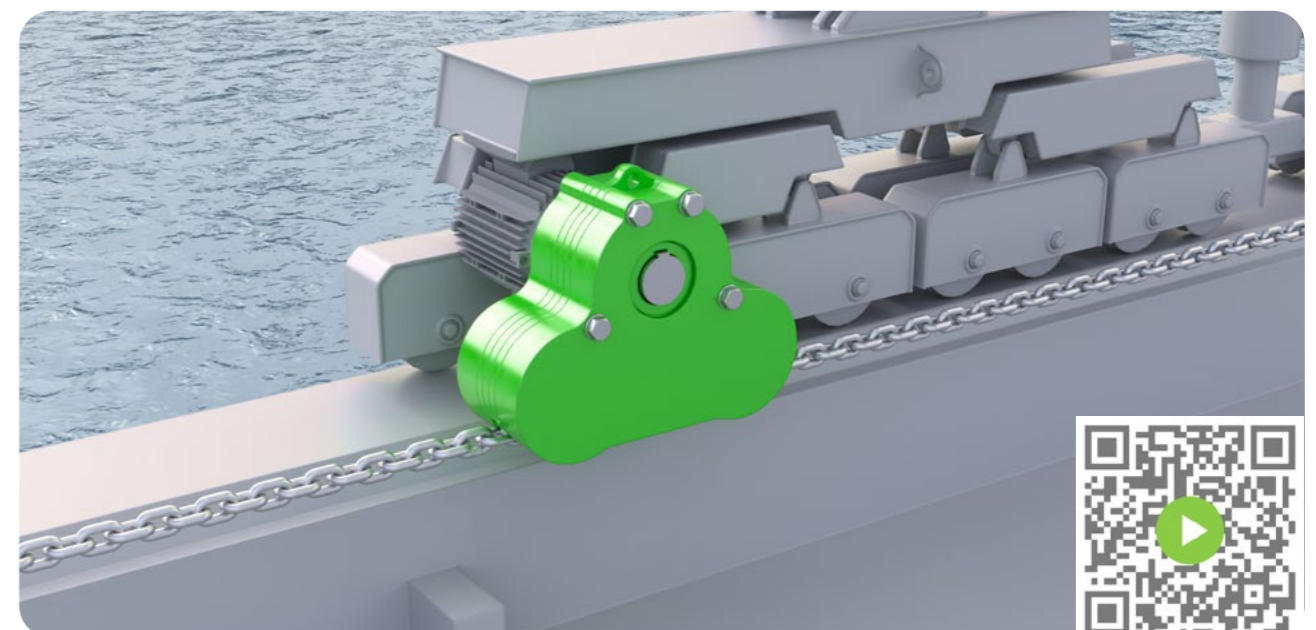
#### TECDOS® OMEGA DRIVE

Approval by major maritime classification societies possible

#### Specifications:

- Operating force 6 – 260 kN
- Mobile or fixed drive
- OMEGA DRIVE Weight 8,2 - 1.327 kg
- Chain speed 1 - 6 m/minute with full load, up to 12 m/minute with part load
- Custom painting possible

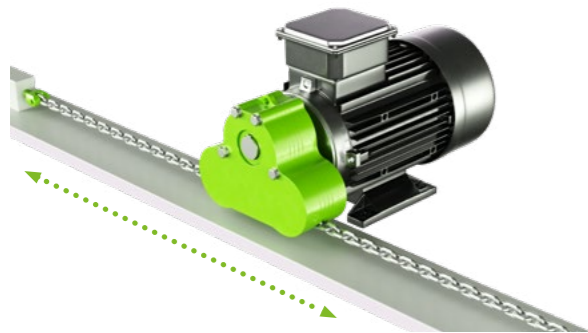
Designation	Height (h) [mm]	Width (b) [mm]	Depth (t) [mm]	Weight [kg]	Diameter (d) shaft mounting [mm]	Number of keyways DIN 6895 [mm] P9	Part no.
OMEGA TEC 6	155	200	73	8,2	25 H7	1	7911329
OMEGA TEC 12	250	280	102	22	40 H7	1	7911339
OMEGA TEC 25	316	372	150	60	50 H7	1	7911347
OMEGA TEC 43	400	472	162	95	70 H7	1	7911374
OMEGA TEC 65	468	580	220	195	90 H7	1	7911383
OMEGA TEC 140	684	867	295	611	130 H7	2 (120°)	7912475
OMEGA TEC 260	913	1,176	371	1,327	180 H7	2 (120°)	7912465



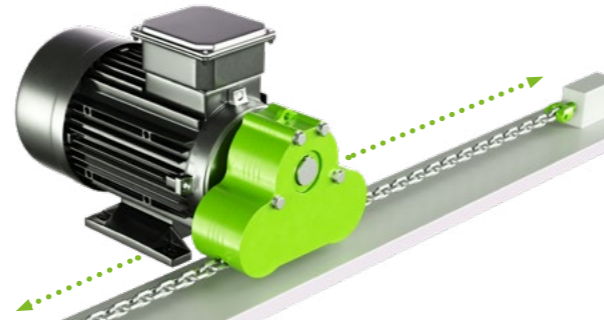
## 2. RUD TECDOS® Systems and products

### 2.4 System applications for TECDOS® OMEGA

**Linear travel, fixed drive and moving-chain / equipment**



**Moving drive and fixed chain / equipment**



**Fixed drive and rotating chain / equipment**



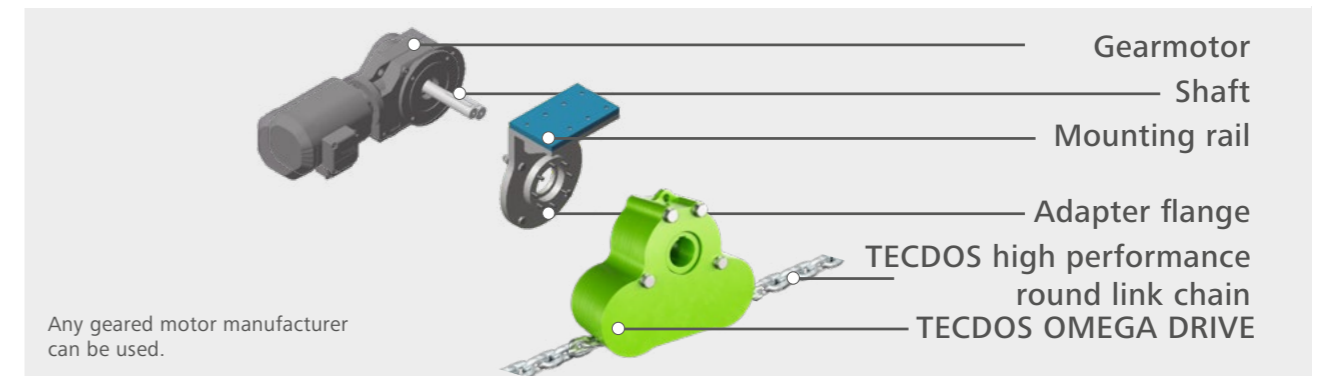
**Fixed chain, drive / equipment moving along curved path**



**Your perfect companion for various systems:**

- Moving harbour and ship cranes
- Aligning and adjusting ship loading and unloading
- Opening and closing sliding doors in the holds
- Rotating and lifting platforms
- Propulsion for ferries on rivers and lakes
- Moving wagons for unloading
- Extending telescopic booms for ship loaders and cranes
- Moving sea posts (spud pole)
- Traversing skidding systems

For maximum flexibility in the choice of an electric, hydraulic or pneumatic motor



**Product advantages:**

- Less sensitive to dirt, sand, ice
- Easy assembly
- Tolerates alignment and measurement deviations, such as temperature elongation
- Does not generate reaction forces
- Can be used in all directions
- Weather and corrosion resistant
- TECDOS® OMEGA DRIVE is available in 7 various operational forces:



## 2. RUD TECDOS® Systems and products

### 2.5 RUD TECDOS® ROUND STEEL CHAIN

The core component of each TECDOS system application is a highly wear-resistant RUD round link chain for maximum service life – even with wear-resistant media. Extremely dynamic strength ensures maximum operational safety.

#### TECDOS is the best solution:

- When high forces have to be transmitted within limited space
- When three-dimensional mobility is required
- Under severe environmental conditions
- When exposed to weather
- In offshore, underwater and harbour applications
- When the means of traction has to have optimised storage capacity

**TIP**  
Lubrication enables you to achieve up to 10-15 fold service life.

#### The right chain for your application:

- When frequent use is required



- When infrequent use is required



#### Medium

Quenched and tempered chain HV approx. 360



#### Premium

Case hardened chain HV 580 – 600



#### Sizes

Round link chain is available in 7 sizes



Chain	Working load [kN]	Breaking force [kN]	Weight approx. [kg/m]	Part-no.	
				Medium	Premium
TEC 6	6	34,0	0,59	7905137	7905146
TEC 12	12 <sup>2</sup>	65,1	1,13	7905102	7905113
TEC 25	25 <sup>2</sup>	126,0	2,24	7905093	7905068
TEC 43	43 <sup>2</sup>	212,3	3,80	7905057	7905040
TEC 65	65 <sup>2</sup>	322,0	5,70	7904959	7905020
TEC 140 <sup>1</sup>	140 <sup>2</sup>	694,0	12,30	7904948	7905015 <sup>3</sup>
TEC 260 <sup>1</sup>	260	1315,0	22,6	7904947	7912664

<sup>1</sup> Topcoat silver <sup>2</sup> When using with TECDOS chain connectors the operational force of the chain has to be adapted according to the specification of the connectors. <sup>3</sup> max. 44 m length per strand

#### Corrosion protection for TECDOS® high performance chain

Surface	Short description of surface coating	New condition	After 100 hours salt-spray test
Electrolytic galvanised	Electrolytic metal deposition (6-10 µm)		
Topcoat silver	Chemical corrosion resistant topcoat (5-12µm)		



## 2. RUD TECDOS® Systems and products

### 2.6 RUD CHAIN CONNECTOR | END FIXING

#### RUD TECDOS® chain connector

TECDOS chains and connectors form a reliable system. Both components perfectly fit in combination with the OMEGA DRIVE or chain wheels.

##### Features:

- Connects the chain to an endless chain loop
- Attention: Operating forces are limited to maximum power of the chain connector

Chain size	Working load [kN]	Load cycles to failure	Max. allowed chain speed	Surface	Weight [kg]	Part no.
TEC 12	9	20.000	8 m/min	Painted	0,035	7908978
TEC 25	18	20.000	8 m/min	Painted	0,095	7908986
TEC 43	30	20.000	8 m/min	Painted	0,2	7908995
TEC 65	45	20.000	8 m/min	Painted	0,38	7908990
TEC140	100	20.000	8 m/min	Painted	1,15	7906522

Attention: Operating forces are limited to the maximum force of the chain lock



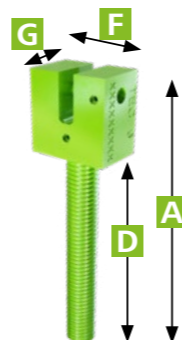
#### RUD TECDOS® chain end fixing

The chain end fixing for linking the chain and load-supporting structures transfers 100% of the TECDOS chain operating forces. Thanks to its adjustable axis, it ensures the most ideal flexibility during use.

##### Characteristics:

- Transfer 100% of the TECDOS chain operating forces
- Axially adjustable
- Suitable for all TECDOS systems

Designation	Chain	Operational Working load [kN]	A [mm]	D [mm]	F [mm]	G [mm]	Weight [kg]	Part no.
HEBG-M12	TEC 6	6	114	84	30	20	0,3	7909076
HEBG-M16	TEC 12	12	145	105	40	30	0,6	7909077
HEBG-M24	TEC 25	25	229	169	60	40	1,9	7909078
HEBG-M30	TEC 43	43	287	217	70	45	3,2	7909079
HEBG-M36	TEC 65	65	379	279	100	54	6,8	7909080
HEBG-M42	TEC 140	140	567	447	120	75	13,5	7909081
HEBG-M48	TEC 260	260	592	442	150	100	23,5	7909082



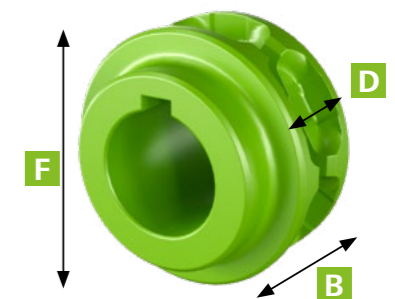
### 2.7 RUD POCKET WHEELS

#### RUD TECDOS® pocket wheels

TECDOS pocket wheels are optimally designed to work with TECDOS chain and guarantee long life and silent running.

##### Features:

- All TECDOS chain wheels are made of low-alloy steel, mechanically processed and tempered or hardened
- Chain wheels available for loads from 6kN up to 260kN
- Geometry of the pockets is perfectly coordinated to the TECDOS round steel chain
- The bore and hub designs can be designed as customer-specific requirements (toothing possible with specification from DIN standard)
- Rust resistant and acid resistant drive and redirection wheels available on request



Chain size	No. of pockets*	Pitch circle diameter ø (mm)	Hub length B [mm]	Bore ø D [mm]	Outer ø F [mm]	No. of Keyways DIN 6885 P9 [mm]	Weight [kg]	Part no.
TEC 6	6	58,4	45	30 H7	63,5	1	0,5	7905327
TEC 12	6	82,3	70	40 H7	89,5	1	1,5	7905328
TEC 25	6	108,0	100	50 H7	118,0	1	3,8	7905329
TEC 43	6	139,2	120	70 H7	152,0	1	7,1	7905330
TEC 65	6	174,5	150	90 H7	190,5	1	13,0	7905331
TEC 140	6	256,2	200	130 H7	279,5	2**	42,6	7905332
TEC 260	6	347,8	250	180 H7	379,5	2**	101,0	7905333

\*) Standard 6 pockets other sizes on request

\*\*\*) Keyways at 120° offset



## 2. RUD TECDOS® Systems and products

### 2.8 RUD FOOLPROOF HIGH DYNAMIC SHACKLE

#### RUD TECDOS® Foolproof high dynamic shackle

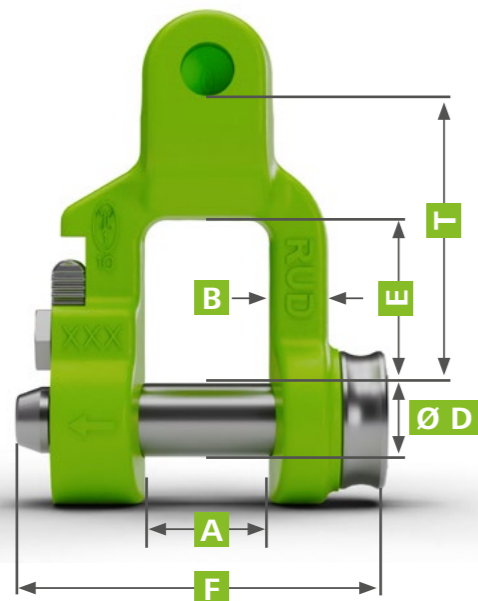
High tensile version with an integrated safety thread in the shackle bracket.

##### Features:

- Smooth bolt support in the shackle on both sides. The bolt can be turned
- No bending strength in the thread (only a securing function)
- Optimal adaptation - max. mouth width with the smallest shackle bolt
- Owing to the turned clevis connection, it is extensively resistant to bending
- Long term securing by driving in the pre-assembled tensioning sleeve
- Special thread, and distinctive in comparison to other shackle bolts
- Pre-assembled connecting bolt and tensioning sleeve

Designation	Chain	A [mm]	B [mm]	C [mm]	D [mm]	E [mm]	G [mm]	H [mm]	T [mm]	Weight [kg/Stk.]	Part no.
Shackles- VV-GSCH 6	TEC 6	17	8	23	10	21	51,5	32	36	0,18	7909779
Shackles- VV-GSCH 8	TEC 12	21	10	27	12	32	64	39	50	0,35	7909780
Shackles- VV-GSCH 10	TEC 25	27	13	36,5	16	35,5	80	51	60	0,76	7909781
Shackles- VV-GSCH 13	TEC 43	33	17	45,5	20	41,5	103	68	77	1,6	7909782
Shackles- VV-GSCH 16	TEC 65	38	21	55	24	49	123,5	80	95	2,96	7909783
Shackles- VV-GSCH 22	TEC 140	53	30	76	36	72,5	172	97	130	7,31	7909784

Attention, this component has been modified for TECDOS applications. Standard components from the RUD VIP Family are not suitable for TECDOS drive chains.



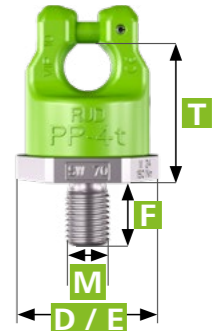
### 2.9 RUD POWERPOINT FIXING POINT

#### RUD TECDOS® PowerPoint fixing point

RUD fixing points are easy to rotate and always the right connection.

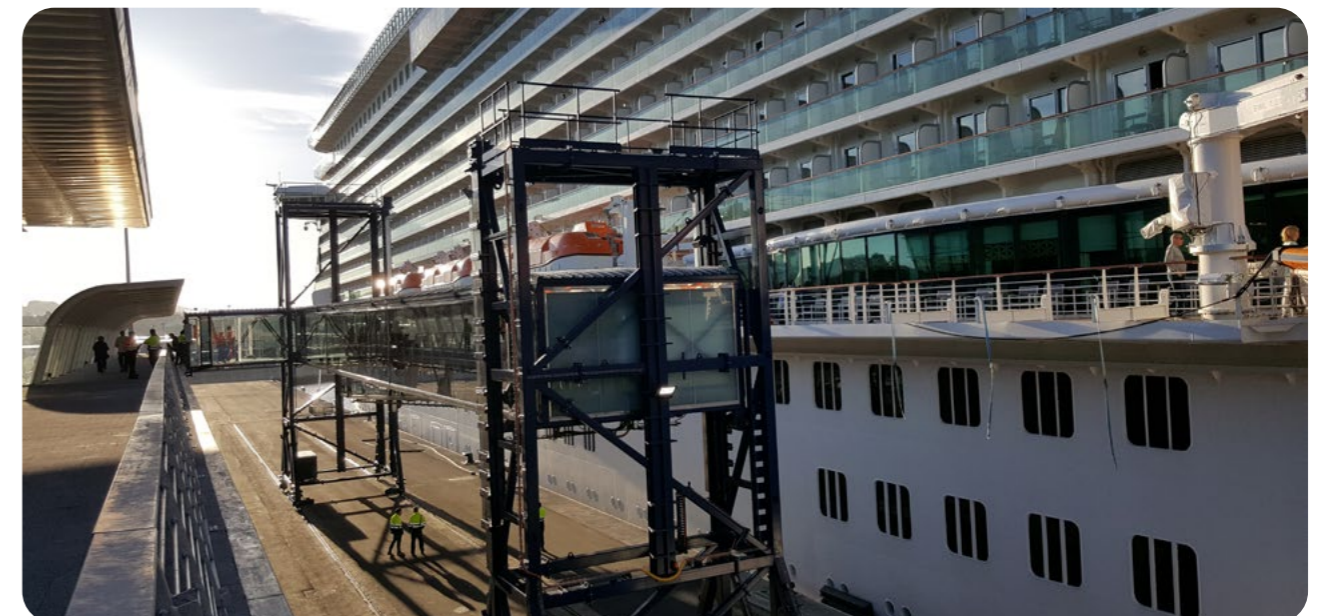
##### Features:

- Rotating 360°, pivoting 230°
- Universal, unmistakable VIP connection for chain, hook and eye
- Double ball bearing for turning/rotating operations
- Completely pre-assembled with TECDOS connecting bolts and clamping sleeve



Designation	Chain	D [mm] corner dimension	E [mm] wrench width	F [mm]	M [mm]	Md [mm]	T [mm]	Weight [kg/Stk.]	Part no.
PP-VIP M16	TEC 6	46	41	25	16	17,5	50	0,42	7909768
PP-VIP M20	TEC 12	61	55	30	20	22	61	0,94	7909769
PP-VIP M24	TEC 25	78	70	36	24	26	77	1,82	7909770
PP-VIP M30	TEC 43	95	85	45	30	33	93	3,47	7909771
PP-VIP M36	TEC 65	100	90	54	36	39	102	4,69	7909772

Attention, this component has been modified for TECDOS applications. Standard components from the RUD VIP Family are not suitable for TECDOS drive chains.



## 2. RUD TECDOS® Systems and products

### 2.10 RUD LIFT LIMITER

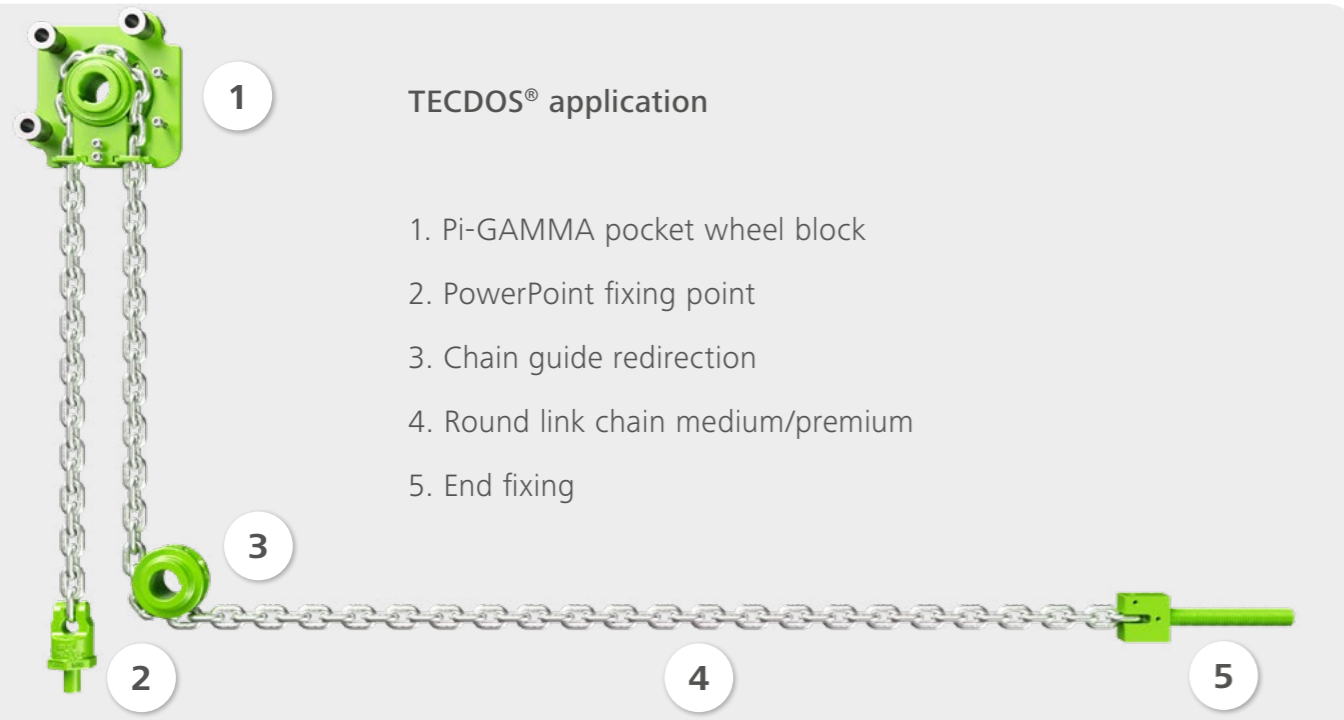
#### RUD TECDOS® lift limiter

The lift limiter prevents the chain from “passing through” i.e. it serves as a travel route limiter on the unloaded sides of the chain.

##### Features:

- Limits the lift of a TECDOS drive system
- Prevents the chain from being pulled through by the PI/ GAMMA or chain guides units

Chain	Weight [kg]	Part no.
TEC 6	0,14	7906314
TEC 12	0,5	7907126
TEC 25	0,4	7906460
TEC 43	1,7	7906401
TEC 65	4,0	7906315
TEC 140	8,0	7906316
TEC 260	28,9	7912434

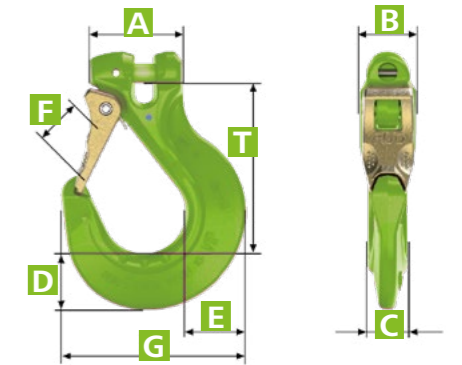


### 2.11 RUD COBRA FORK HEAD HOOK

#### RUD TECDOS® Cobra fork head hook

##### Features:

- Very robust design without a protruding hook tip
- The forged safety latch engages in the tip of the hook and is thus protected against lateral bending
- With a triple coiled corrosion protected double leg spring
- Thickened tip of the hook to prevent misuse
- Wear marks on both sides
- Gauge marks for measuring the width of the hook opening
- Completely pre-assembled with TECDOS connecting bolts & clamping sleeve



Designation	Chain	A [mm]	B [mm]	C [mm]	D [mm]	F [mm]	F <sub>max</sub> [mm]	G [mm]	T [mm]	Weight [kg/Stk.]	Part no.
Hook VCGH 6	TEC 6	38	22	16	20	25	45	72	76	0,4	7909773
Hook VCGH 8	TEC 12	50	28	20	28	30	52	95	97	0,8	7909774
Hook VCGH 10	TEC 25	60	36	26	36	35	65	118	108	1,5	7909775
Hook VCGH 13	TEC 43	76	46	30	37	40	73	135	126	2,8	7909776
Hook VCGH 16	TEC 65	83	56	36	49	48	87	161	152	4,7	7909777
Hook VCGH 22	TEC 140	117	78	50	74	63	114	223	198	11,9	7909778

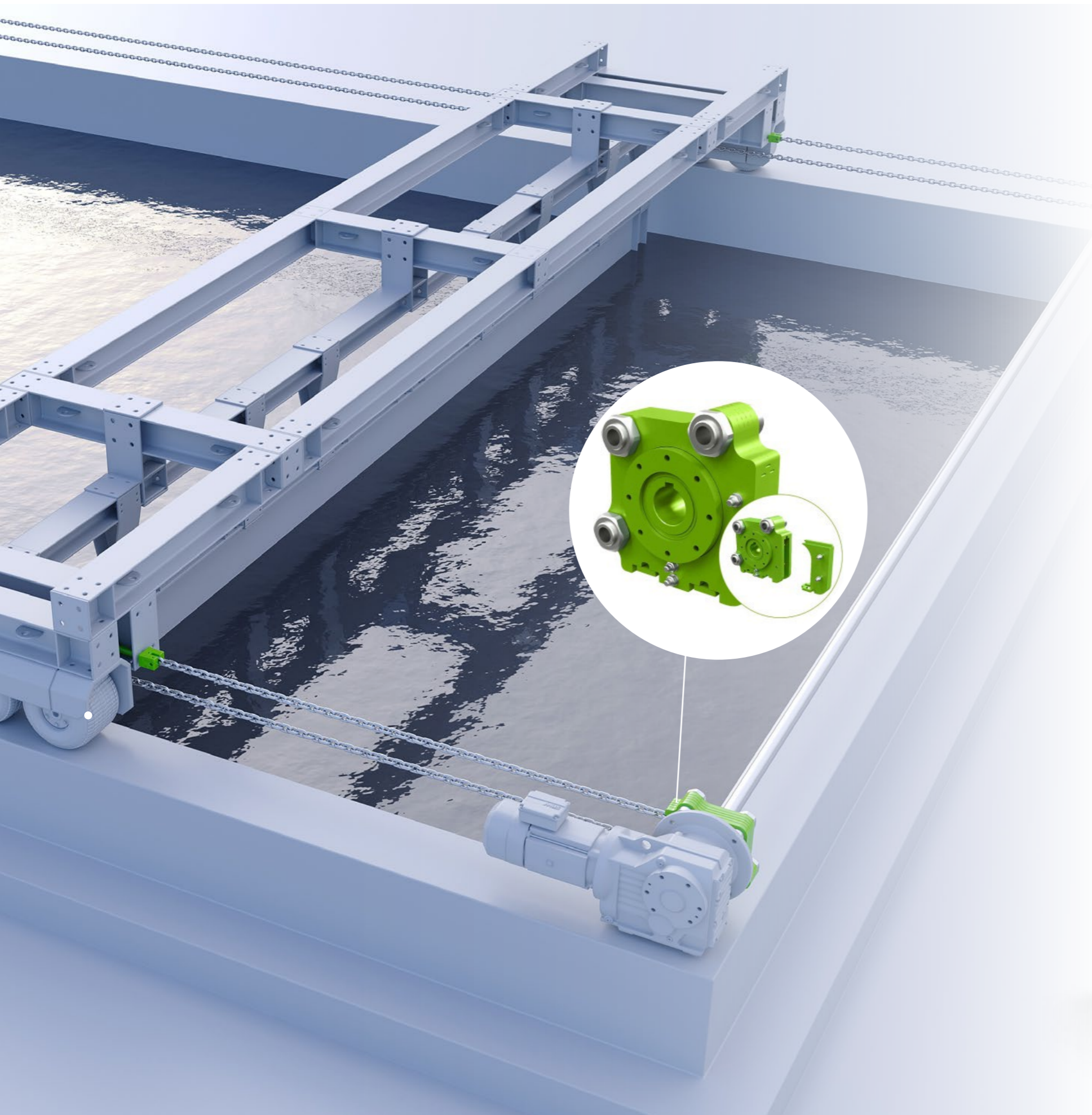
Attention, this component has been modified for TECDOS applications. Standard components from the RUD VIP Family are not suitable for TECDOS drive chains.



Discover now **RUD TECDOS chains drivers and components** on traceparts. RUD product-download simplifies design! [Click here](#) or search [www.traceparts.com/en](http://www.traceparts.com/en) for **TECDOS**.



Discover now **RUD TECDOS chains drivers and components** on CADENAS. RUD product-download simplifies design! [Click here](#) or search [www.cadenas.de/en](http://www.cadenas.de/en) for **TECDOS**.



## 3. DRIVE SOLUTIONS

MOVE  
ADJUST  
DRIVE

Innovative and high-performance drive systems for linear and rotating movements.



**REAL CHALLENGES  
REAL SOLUTIONS**

The RUD TECDOS Book is more than just a technical brochure: It showcases real projects where we have provided drive components for innovative and efficient systems.

Curious? You can easily order your free copy here.



### 3. RUD TECDOS® DRIVE SOLUTIONS



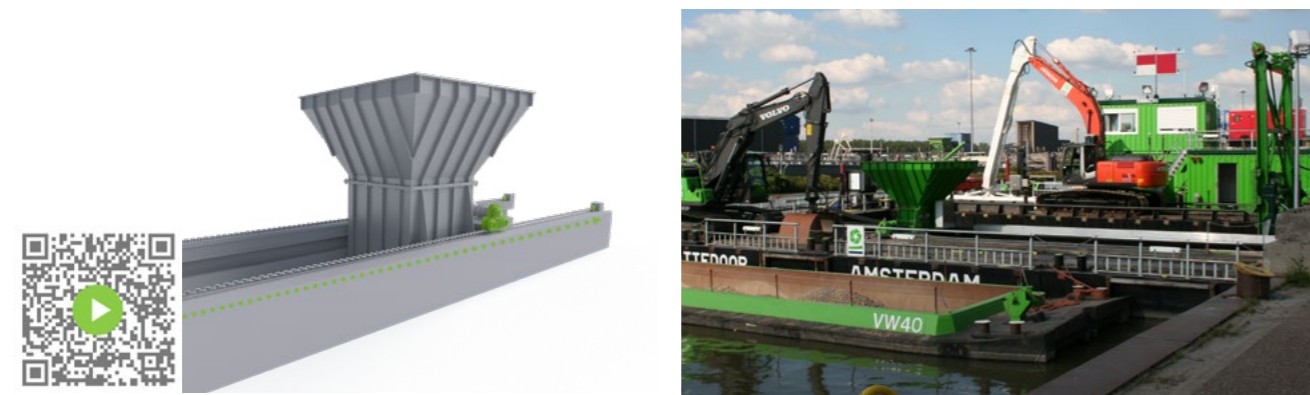
**Movable roof solutions**  
For flexibility & freedom overhead

If you want maximum freedom, choose a sliding roof! Large roof coverings, which you can slide back when necessary, are commonly found in industrial production halls like sports stadiums, swimming pools, spa pools or event venues.



**Blade Turning Device**  
Transporting bulky, sensitive rotor blades

Assembling and erecting turbines requires handling equipment with which the long rotor blades [up to 80 Mtrs] can be secured, aligned horizontally and rotated around the longitudinal axis.



**Skidding**  
Reliable solution for moving loads from one point to another

For bulk material handling on a dredger, a robust and easy-to-install solution which is resistant to sand or gravel blocking.



#### DISCOVER MORE FASCINATING APPLICATION EXAMPLES

The RUD TECDOS Book provides you with comprehensive insights into innovative projects and customised drive solutions across various industries. From movable roof systems to the safe transport of heavy loads – get inspired and find the right solution for your challenge.

Curious? You can easily order your free copy here.





## 4. SERVICE

COMPETENT  
RELIABLE  
REACHABLE

We can provide you with extensive service and support. Our expert knowledge can support you during and after the optimisation of your process.

## 4.1 RUD TECDOS® SERVICE

Phone: +1 (416) 900-3271  
Web: [www.rud-cd.com](http://www.rud-cd.com)  
Mail: [info@rud-cd.com](mailto:info@rud-cd.com)

TECDOS high performance chains are extremely robust and require very little maintenance due to their simple construction. The following points are our support for a improved operating safety:



RUD Service

### Measure, document, maintain

- Consultation and recommendation for spare parts
- Maintenance
- Replacement of competitors products with RUD products
- On-site consultation
- Measuring and testing
- On-site installation
- Fault elimination
- Inspection
- Retrofitting



RUD Engineering

### Calculation, Construction & Consultation

- Product development and further development
- Dimensioning of the best components for your individual requirement
- Technical consultation, if needed on-site
- Synchronisation of all components to your individual requirements
- On request provision of CAD files
- Problem solving in case of difficult cases of operation

Start benefiting from our Remote Service. This service, which requires no human contact, enables us to provide remote support and identify faults. With it, we can implement and support measures to resolve faults and errors instantly. We can also help you install our components and ensure that your systems work properly from the start.



### Increase productivity

The real-time fault analysis functions enable problems to be resolved more quickly. Your machine downtimes are reduced and productivity increases, boosting your ROI.

### Reduce your costs

The remote support provided by our experts can now reduce inspections and maintenance or repair work, without any need for time-consuming, expensive visits to site.

### Available anywhere

No matter whether you are outdoors or in your office or workshop, our experts can provide you with sound advice anywhere that has a basic internet connection.

### Contact-free live contact

You can now benefit from the audio-visual support provided by our experts, and increase the efficiency of your daily operations.

## Our services in detail:

- Analysis and evaluation of the error and fault data and descriptions sent to us
- Error and fault identification and diagnosis
- Support during commissioning, repairs and fault/error resolution
- Support while operational systems are running
- Staff training
- Provision of relevant operating manuals

## 4.2 RUD LOCATIONS



Users around the globe appreciate our innovative strength and our intelligent RUD TECDOS drive solutions for lifting, moving, slewing, telescoping and turning loads. In order to be as close as possible to our customers, we are constantly expanding our worldwide sales network. With a large number of RUD subsidiaries, associated companies and specialist trade partners, we ensure that our consulting partners expertise and products network are available worldwide.

## 4.3 Technical questionnaire

FOR TECDOS® DRIVE SYSTEMS

Please copy and send to:

**info@rud-cd.com**

**RUD Conveyor & Drive North America**  
 29 Prince Andrew Pl, North York, ON M3C 2H2  
 Canada  
 Phone: +1 416-900-3271  
 info@rud-cd.com · www.rud-cd.com

**USA Warehouse**  
 2145 Internationale Parkway Suite-800 Woodridge,  
 IL 60517, United States  
 Phone: +1 779-232-1846  
 info@rud-cd.com · www.rud-cd.com

### CONTACT DATA

Company:*	Contact:*
Street:*	E-Mail:
ZIP / City:*	Tel.:
Date:	Preferred delivery date:

### PROJECT

Task:  lifting  pulling  other:

\_\_\_\_\_ Please also send a separate sheet for sketches

Maximum tensile strength on the chain [kN]: \_\_\_\_\_ weight [kg]: \_\_\_\_\_ Friction factor [μ]: \_\_\_\_\_

Roller friction 0 wheel / material parameter \_\_\_\_\_ Sliding friction: Friction factor\* \_\_\_\_\_

Max. speedup [m/s<sup>2</sup>] / max. detension [m/s<sup>2</sup>]: \_\_\_\_\_

Speed[m/min] from: \_\_\_\_\_ to: \_\_\_\_\_

Cycle operation??  yes  no Cycles per: \_\_\_\_\_

Duty and passive state per cycle:: \_\_\_\_\_

Total operating time daily [h]: \_\_\_\_\_ Annually [h]: \_\_\_\_\_

Length of traverse path [mm]: \_\_\_\_\_

Number of load chain strands: \_\_\_\_\_

New project  Conversion Retrofit (specify housing dimensions) \_\_\_\_\_

Drive pocket wheel - pitch circle diameter [mm]: \_\_\_\_\_

Drive shaft diameter [mm]: \_\_\_\_\_

Chain used before conversion, type and dimensions, max breaking load, operating time and reason for the break down:

Environmental influences:  corrosive  abrasive  temperature  others \_\_\_\_\_

Remarks: \_\_\_\_\_

Drive system:  Direct drive  Gear motor  Pneumatic motor  Hydraulic motor  Electric motor \_\_\_\_\_

Current situation: \_\_\_\_\_ Rotational speed: \_\_\_\_\_ Performance: \_\_\_\_\_ Type: \_\_\_\_\_ Protection cover IP: \_\_\_\_\_

Desired situations: \_\_\_\_\_

**RUD Conveyor & Drive North America**  
29 Prince Andrew Pl, North York, ON M3C 2H2  
Canada  
Phone: +1 416-900-3271  
info@rud-cd.com · www.rud-cd.com

**USA Warehouse**  
2145 Internationale Parkway Suite-800 Woodridge,  
IL 60517, United States  
Phone: +1 779-232-1846  
info@rud-cd.com · www.rud-cd.com

**RUD Ketten**  
**Rieger & Dietz GmbH u. Co. KG**  
Friedensinsel  
73432 Aalen, Germany  
Phone: +49 7361 504-1457  
Mail: salesfa@rud.com  
Web: www.rud.com



## RUD Conveyor & Drives



### RUD TECDOS Mould Handling Solution

Efficient and safe handling of moulds in the injection moulding industry. We have different solutions for turning, opening and closing that optimise your processes.



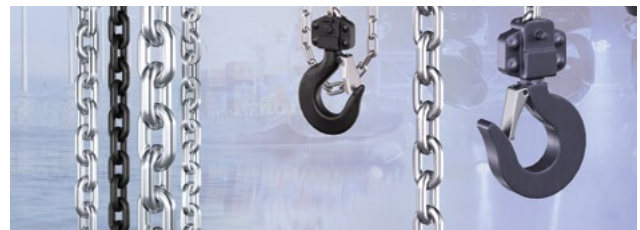
### RUD TECDOS Drive Technology

Rotating, lifting, moving or telescoping - with our drive systems RUD TECDOS OMEGA and RUD TECDOS PI-GAMMA, we offer maximum efficiency and reliability.



### RUD Conveyor Technology

Combinable components & individual parts for conveyor technology, conveyor systems and mining. RUD offers you perfectly coordinated systems and components for horizontal, vertical and inclined conveyors.



### RUD Industrial Chains

RUD components are the first choice worldwide for leading hoisting equipment manufacturers. We also offer a wide range of round link chains for different industries and areas, such as food, fishing and awnings.